

Luxa Homecare Instruction Manual

Product Code: 7-LUXA

Please Carefully read instructions before using the bed.

Alrick.



INTRODUCTION

This instruction manual contains information on the instructions for use and explanations of the signs and symbols used. These instructions for use contain instructions for operating the medical care bed.

These instructions for use may contain inaccuracies or printing errors. The information provided here will be updated periodically and changes due to product maintenance will be included in later editions. Changes or improvements are possible at any time without prior notice. If you have any questions, please contact our customer service team.

The instructions for use must be read and used by every person who operates the medical bed.

PURPOSE

The intended purpose of the Alrick Luxa Homecare Bed is to be used for patients in hospital and healthcare facilities. These beds are electrically powered to allow the bed to be placed in various positions suitable to the patient. It is a medical device intended for human medical use only.

The Alrick Luxa Homecare Bed moves on castors and features infinitely adjustable motorised height settings. The bedding area can be adjusted by multiple motors, allowing for positions such as sitting or exiting position.

The intended user of the Alrick Luxa Homecare Bed is any individual who has a disability or a health condition.

The bed should only be used by individuals trained or experienced in proper handling. Users must be instructed on its correct use and familiarize themselves with these instructions. Common users include nursing staff, physicians, therapists, family members, technicians, residents, and cleaning staff.

SYMBOLS EXPLAINED



Manufacturer



For Indoor Use (house)



Type B Application Part (classification according to the degree of protection against electric shock)



Product with a Thermofuse



Safety Isolating Transformer

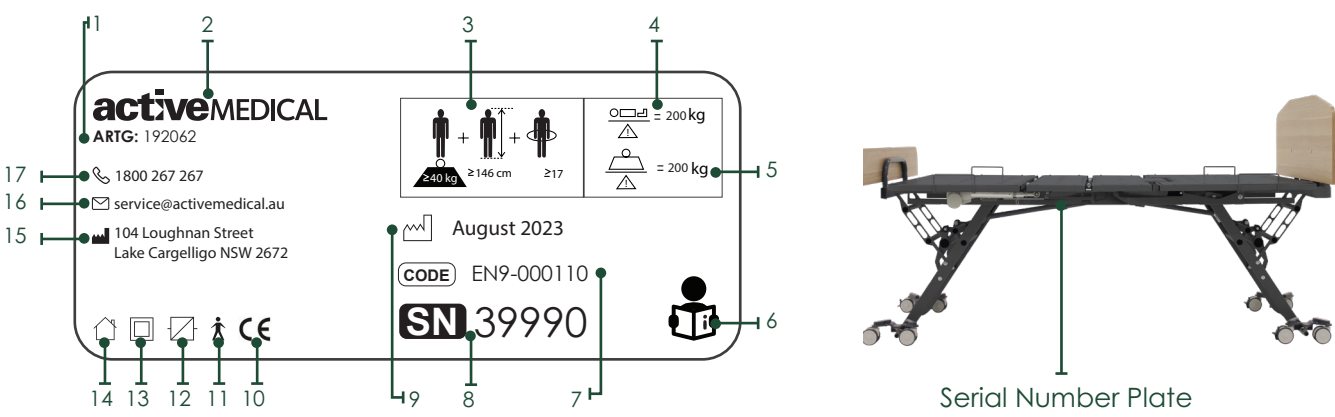


Device Protection Class II (classification according to the type protection against electric shock)



Demko Approval

PRODUCT SERIAL NUMBER PLATE



SERIAL NUMBER PLATE EXPLAINED

- 1 ARTG Number
- 2 Company Logo
- 3 Adult Identification (minimum weight, minimum height, minimum BMI)
- 4 Maximum Occupant Weight
- 5 Maximum Safe Working Load
- 6 Read Instruction Manual - Follow Instructions For Use
- 7 Product Code
- 8 Product Serial Number
- 9 Manufacture Date
- 10 CE Marking
- 11 Type B Application Part (classification according to the degree of protection against electric shock)
- 12 Switching Power Supply Unit
- 13 Device Protection Class II (classification according to the type protection against electric shock)
- 14 For Indoor Use Only
- 15 Manufacturer Address
- 16 Company Service Email Address
- 17 Company Phone Number

OLD POSITIONING OF SERIAL NUMBER PLATE (2023 AND EARLIER MODELS)



PRE OPERATION CHECK

WITH BED IN POSITION, CHECK THE FOLLOWING:

Electric beds should ONLY be used where earth leakage is fitted to the power source.

- Check power cord is plugged into 240V supply and is active.
- Check power cord is clear of castors and any moving part of bed.
- Ensure power cord has enough slack so cord is not strained when the bed is raised and lowered.
- Position bed at least 50mm from the floor in the lowest position. Lock castors. This position is critical so as not to damage the wall when raising the bed.
- Before using bed perform all functions to ensure they are working properly. If not please call your service technician or call Alrick Technician Team on 1800 267 267

** When fitting safety sides to this bed please beware of the possible crushing points. The clamps can create crushing points on the rails. **

LUXA HOMECARE SERIES MODEL'S AVAILABLE


Luxa Homecare - Single Size (900mm)

Luxa Homecare - King Single Size (1070mm)

Luxa Homecare - Double Size (1370mm)

Luxa Homecare - Queen Size (1500mm)

SPECIFICATIONS

	Single	King Single	Double	Queen
Height Range (mm)	150 - 725	150 - 725	170 - 725	170 - 725
Backrest Angle (degrees)	62	62	62	62
Kneebreak Angle (degrees)	35	35	35	35
Trendelenburg Angle (degrees)	15	15	15	15
Reverse Angle (degrees)	15	15	15	15
SWL (kg)	250	250	250	250
Overall Dimensions (mm)	2160 x 1000	2160 x 1170	2160 x 1470	2160 x 1600
Sleeping Surface (mm)	2000 x 900	2000 x 1070	2000 x 1370	2000 x 1500
Mattress Size (mm)	1960 x 860	1960 x 1050	1960 x 1350	1960 x 1480
TGA Number	ARTG 192062			
Manufacturer 	Active Medical, 104 Loughnan Street, Lake Cargelligo NSW 2672			

ELECTRICAL DATA

U In	230V ~, 50Hz
I In	Max. 1.5A
U Out	24V ... , max. 70W
Op.	10%, Max. 2min./18min.
Protection Class	1Px4
Insulation Class	II Type B
Noise	48DBA



For indoor use (house)



Safety isolating transformer



Type B equipment, as per EN60601+1



Device Protection Class II



Product with a thermo fuse



Demko approval

RE-Tuv approval

IMPORTANT

- Check electric cords regularly and notify an electrician or Alrick on 1800 267 267 immediately. If any damage occurs, cease to use and remove mains power until checked and repaired.
- No wiring is to be modified without authorisation from the manufacturer.
- Ensure the small extension cable is correctly connected to the bed socket and to the 240 volt supply when the bed is in a stationary position. A small light on the control box will illuminate showing a power supply.
- Low Low model beds should be left in the lowest position when a nurse is not in attendance.
- Nurses, cleaners or anyone using Alrick Electric Beds must make sure that the main power cord is clear of any moving parts on the bed before turning the power on.
- Electric Beds should ONLY be used where earth leakage is fitted to the power source.
- When patient condition could lead to patient entrapment, the mattress support platform should be left in the flat position when unattended.

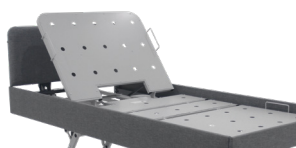
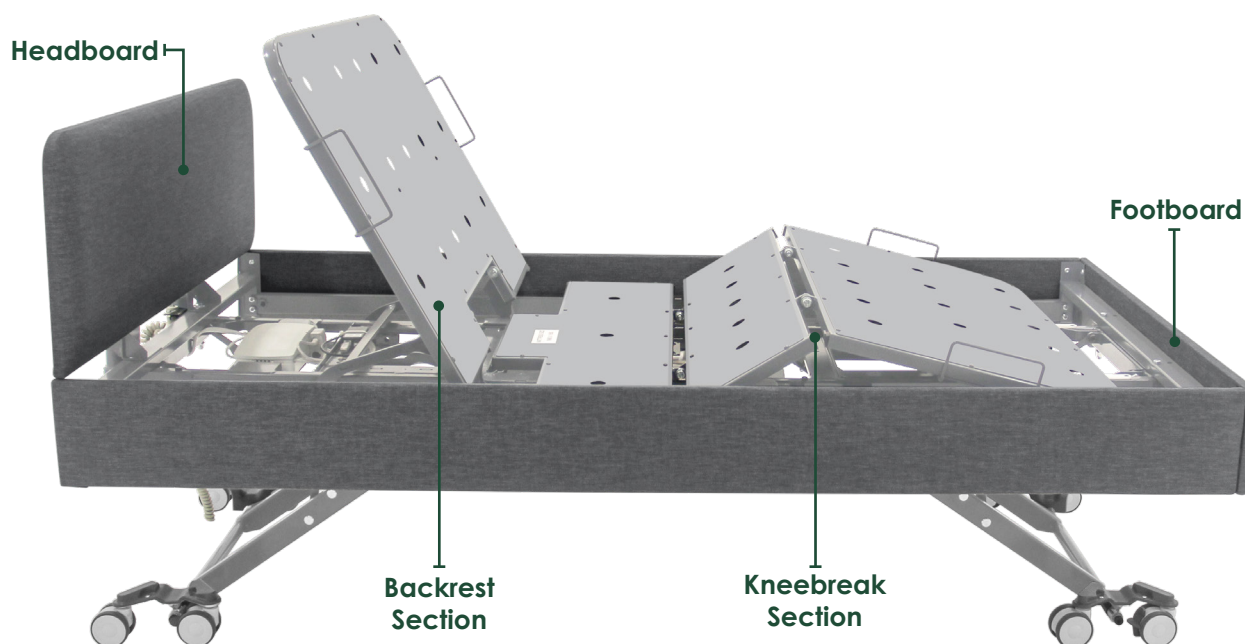
OPERATOR CONTROLS



OPERATOR CONTROLS:

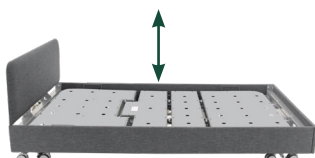
Electric Beds are controlled by a handset, which is plugged into the connection port. (Normally located below and at the edge of the mattress base towards the head end).

Handset Code: HB8X255-00



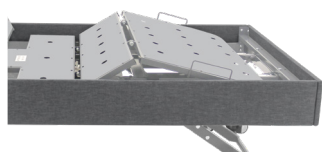
UPPER POSTURE, ELECTRIC BACKREST:

The top pair of push buttons control the electric upper posture as indicated on the handset. Beware of potential pinch points when lowering backrest.



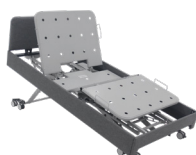
HI-LOW OPERATION:

The second pair of buttons on the handset control the smooth operation of raising & lowering the bed. When raising and lowering the bed, ensure that no person or part of his or her body is under the bed. Failure to do so could cause serious physical injury.



ELECTRIC KNEEBREAK:

The third pair of push buttons on the handset control the operation of the kneebreak. Beware of potential pinch points when lowering kneebreak.



CHAIR POSITION:

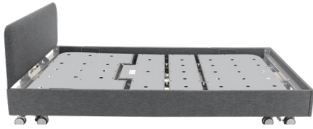
The fourth set of buttons operate the chair function.



ELECTRIC TRENDELENBURG:

The last pair of push buttons on the handset control the operation of the tilt.

Beware of potential pinch points when using the tilt function.



NIGHT MODE:

Night Mode returns all functions to the lowest position.

WARNING: The bed stops at approx 170mm from the floor, at this point, it is the responsibility of the carer to make sure there is nothing under the bed. Once checked, they can lower the bed to its lowest point of 100mm.



UNDER BED LIGHT:

The last button on the bottom left controls the under bed light (optional extra).

OPTIONS & EXTRAS



BATTERY BACK UP:

Allows you to safely change the patients position during a power shortage.



UNDER BED LIGHT:

The under bed lighting feature provides ease of movement and access to the bed in dim conditions or at night. This will assist in the prevention of falls.

CASTORS



STANDARD CASTORS:

To activate breaking, place your foot on the small grey pedal and press down. To release this, put your foot underneath the pedal and flick it upwards until it unlocks.



DUAL LOCKING CASTORS:

To activate breaking, place your foot on the grey bar pedal and press down firmly. To release this, put your foot underneath the grey bar pedal and flick it upwards until it unlocks.

FITTING THE LUXA HEADBOARD



CONTENTS LIST:

- Headboard
- 1 x Mounting Bracket
- 4 x Screws

TOOLS REQUIRED:

- 5mm Allen Key
- 5 x 15mm Spanners



STEP 1

Fit the headboard bracket to the headboard with 4 x M8x25 bolts (if not fitted).



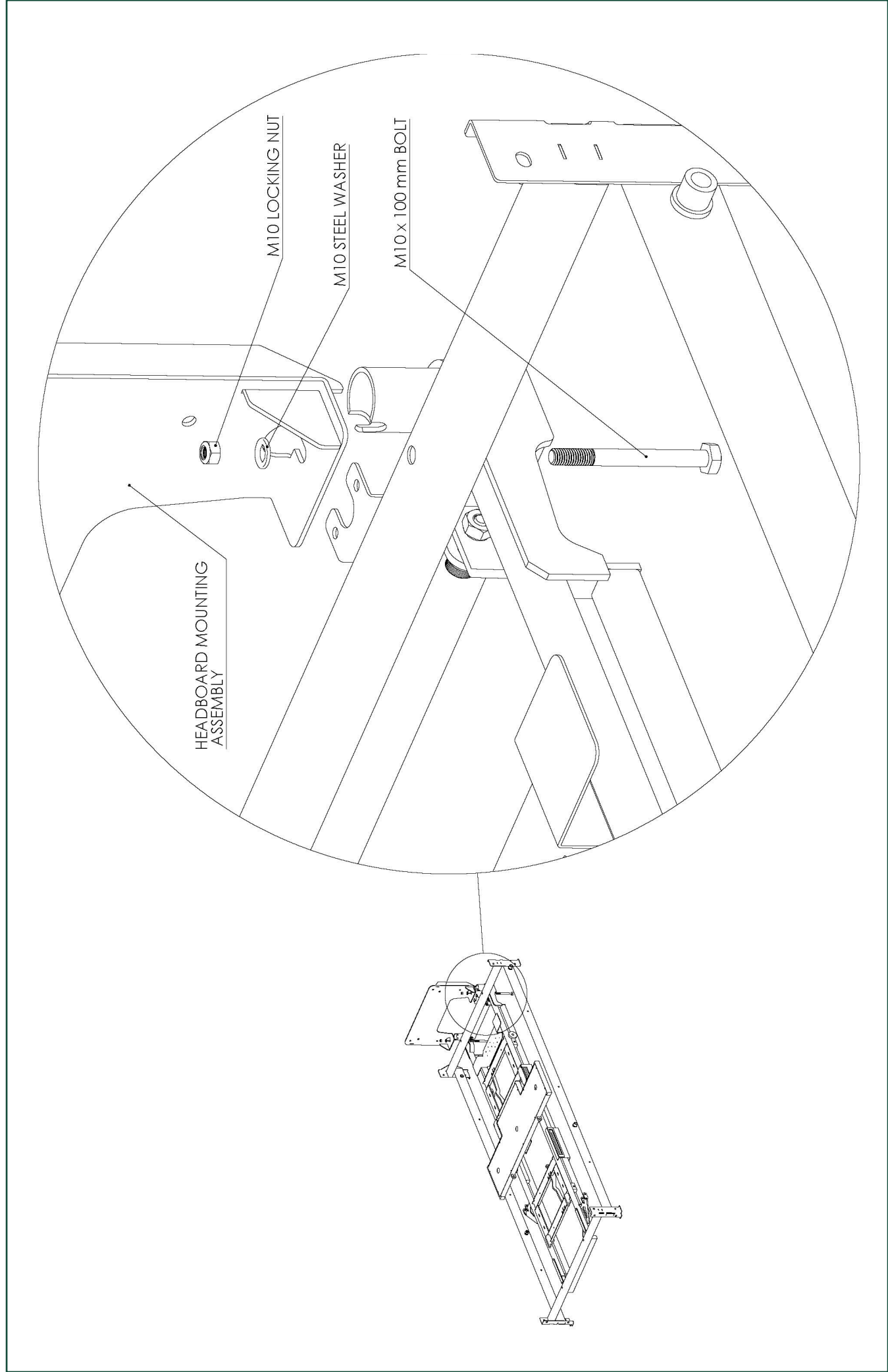
STEP 2

To fit headboard to the bed, start by removing 2 x 100mm bolts and washers from the bed frame.



STEP 3

Sit the headboard on head end frame and insert 100mm bolts with washers from the bottom up. Place washers and nuts onto the bolts and tighten.



FITTING THE RAILS (optional)



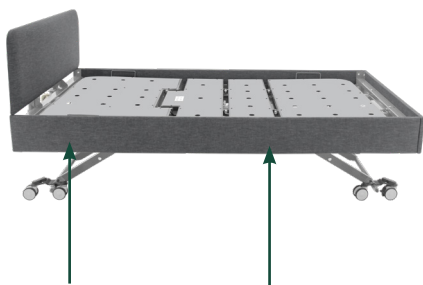
CONTENTS LIST:

- 2 x Rails
- 8 x M12 metal washers
- 4 x Zinc plated bushes
- 4 x M12 nylon washers
- 4 x M12 lock nuts

TOOLS REQUIRED:

- Stanley knife
- 2 x 19mm spanners

Please use image on next page to assist you.



STEP 1

Locate the rail mounting holes on the side panel of the padded surround, both holes are 120mm down from the top side of the panel. The first hole is located 65mm in from the head end and the second hole is 1295mm further down.



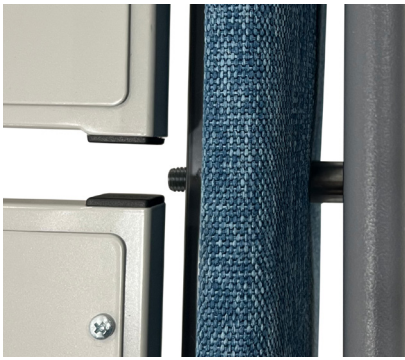
STEP 2

Once you have located both holes, cut the fabric with the Stanley knife to expose both holes.



STEP 3

Place nylon washer on the bolt welded to the rail, then slide spacer and metal washer onto bolt.



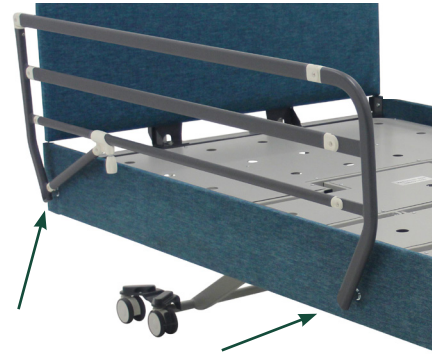
STEP 4

Push bolt through padded side and frame.



STEP 5

Put metal washer and nyloc nut onto bolt and tighten with spanner.



STEP 6

Follow steps 3 - 5 again, for fitting the rail at the other end of the bed.



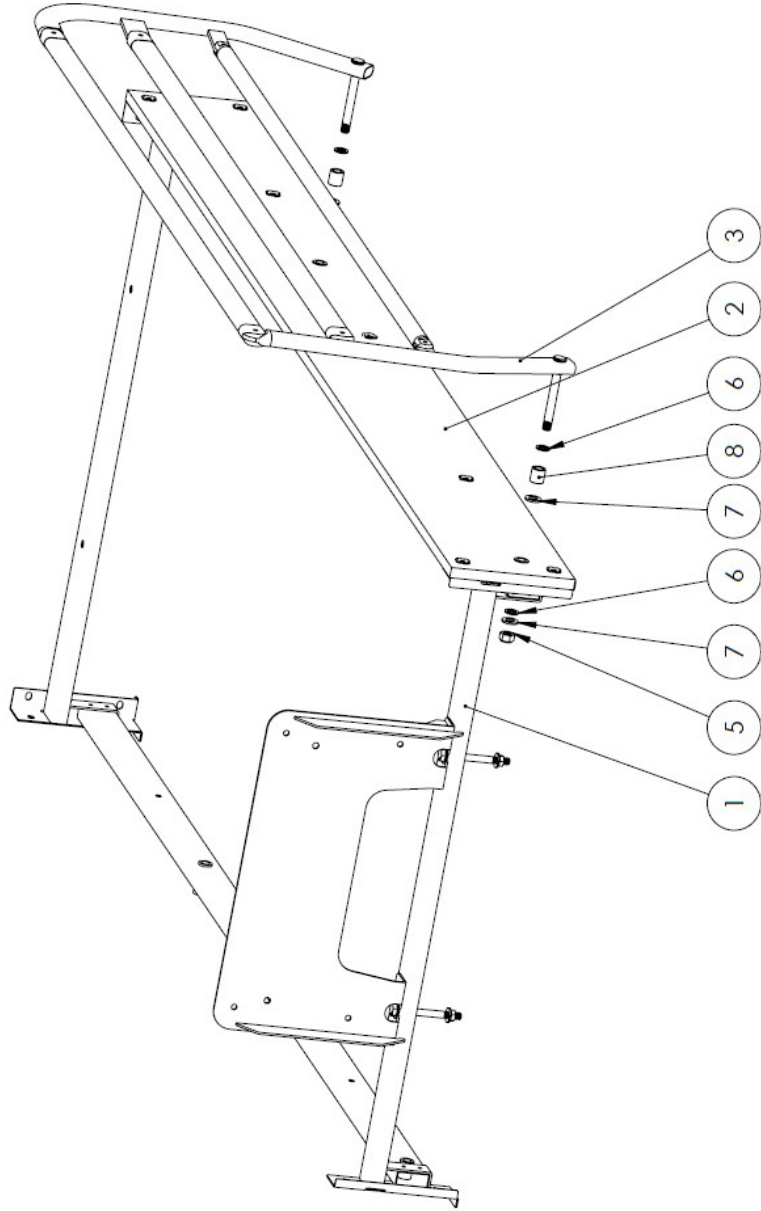
STEP 7

Repeat for fitting the second rail to the other side of the bed surround.



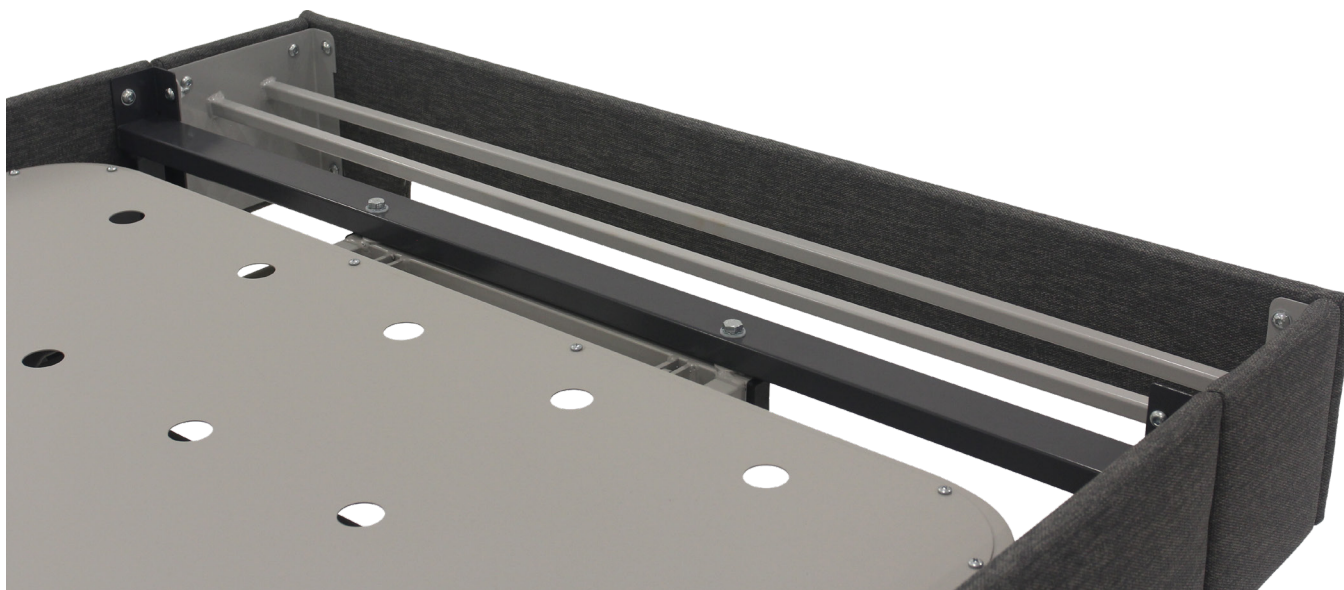
STEP 8

Test rails before putting to use.



ITEM NO.	PART NUMBER
1	FRAME ASSEMBLY
2	LONG BOARD ASSEMBLY-RH
3	TR ASSEMBLY-RH
5	M12 NYLOCK NUT
6	M12 PLASTIC WASHER
7	M12 STEEL WASHER
8	SPACER

FITTING THE LUXA EXTENSION (optional)



CONTENTS LIST:

- Extension with padded sides
- 4 x M8 Nyloc Nuts
- 4 x M8x20 Button Head Bolts

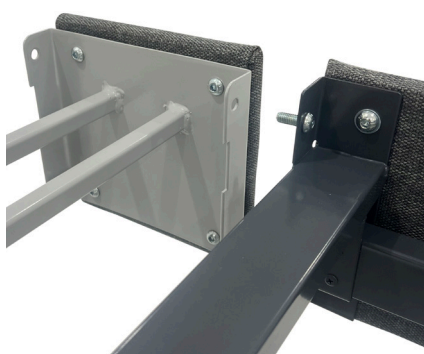
TOOLS REQUIRED:

- 13mm Spanner
- 6mm Allen Key



STEP 1

Remove the footboard by removing the 4 bolts and washers, with an allen key.



STEP 2

Use the M8x20 bolts and washer to bolt extension onto the surround frame.



STEP 3

Replace the foot board with the 4 bolts and washers removed in step one.

FITTING THE LUXA CLAMP ON SUPPORT RAIL (optional)



STEP 1

Put the bed in the highest position.



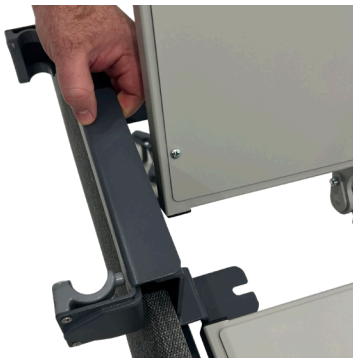
STEP 2

Raise the backrest.



STEP 3

Remove the height adjuster from the CLP.



STEP 4

Position the height adjuster in line with the head end fixed section.



STEP 5

Push height adjuster down with force.



STEP 6

Slide CLP rail up through the height adjuster (with the clamps under the bed surface).



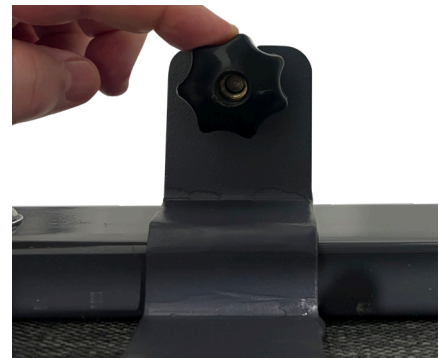
STEP 7

Hold rail in place.



STEP 8

Adjust the black knob to the correct height.



STEP 9

Slide knob into place on the height adjuster.



STEP 10

Repeat steps 6, 7 and 8 for the other side.



STEP 11

Ensure CLP is securely attached before using with patient.

SAFETY AND WARNINGS

- Electric Beds should ONLY be used where earth leakage is fitted to the room or building.
- If any cords are cut or damaged the bed MUST not be used until checked, fixed and tagged.
- No patient, service personnel or any person must lie underneath an Alrick bed while power is turned on, if not obeyed this may result in serious bodily injury or death if the bed controls are actuated.
- Please check no person or object is under the bed before using.
- Hand control to only be given to fully competent patients.
- Never leave hand control unattended with bed switched on unless patient is fully competent.
- Fit optional nurse lockout for safety of incompetent patients.
- Only one person is to be on the bed at any time.

MAINTENANCE

- Beds should be inspected monthly for abnormal wear. For example, bolts loose or missing, castors, rubbers or brakes damaged.
- Rails must be inspected regularly for any wear or movement that may cause injury, do not use if unsure.
- If one or more of the bed functions is found not working correctly, notify the manufacturer for advice.

EVERY 6 MONTHS:

1. Check there is no visible damage to electrical system or mechanical parts.
2. Check wiring is secure and not interfering with bed movement.
3. If actuator shafts are not clean - wipe chromed shaft of actuators to remove lint, grease & dirt.
4. Extended actuators fully (Do not wash as this removes fine layer of oil).
5. Correct operation of all bed functions including castor locking.
6. Check all accessories including rails are still functioning properly.
7. Check all pivot points on the bed for wear. Replace pivot pins or bolts and removable bushes (where fitted) if a pivot has a significant play.
8. Check all functions still run smoothly.

ANNUALLY:

- Professional service of product to be carried out annually & documented in 'Record of Performed Service Procedures and Regular Service Maintenance in the back of this instruction manual.

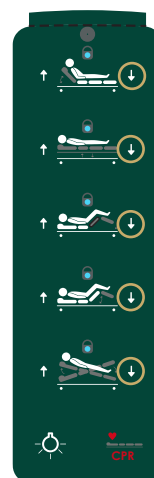
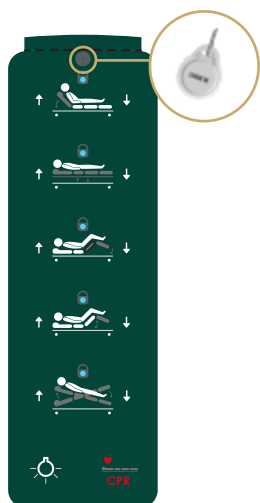
CLEANING

- Cleaning can be done often - using domestic detergents.
- Do not use acids, alkaline or any other chemical solvents
- When cleaning actuators disconnect from mains power before wiping down with a moist cloth.
- When cleaning, be careful of entrapment, as it could cause physical injury.

LOCKING AND UNLOCKING LOCK OUT FUNCTIONS (optional)

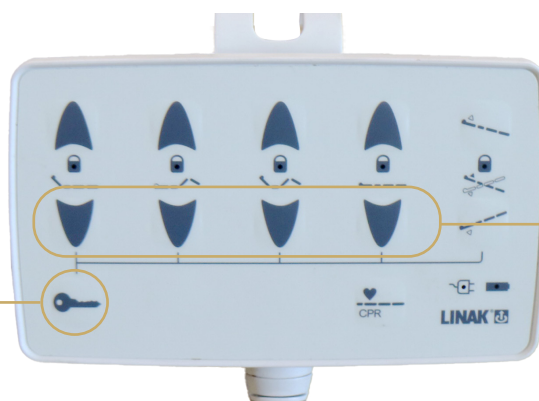
HB400 HANDSET:

1. Locate the fob over the top of the handset as shown.
2. Then press the down key of the function to be locked out or unlocked. When locked, the LED function will be illuminated.



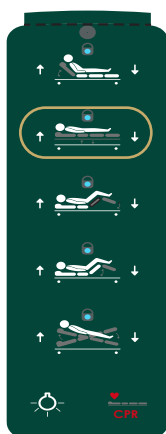
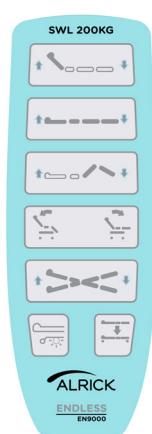
ACOM ATTENDANT CONTROL:

1. Press and hold the key button.



2. Then press the down key of the function to be locked or unlocked.

RESETTING AN LUXA HOMECARE BED FITTED WITH A CO71 LINAK CONTROL BOX:

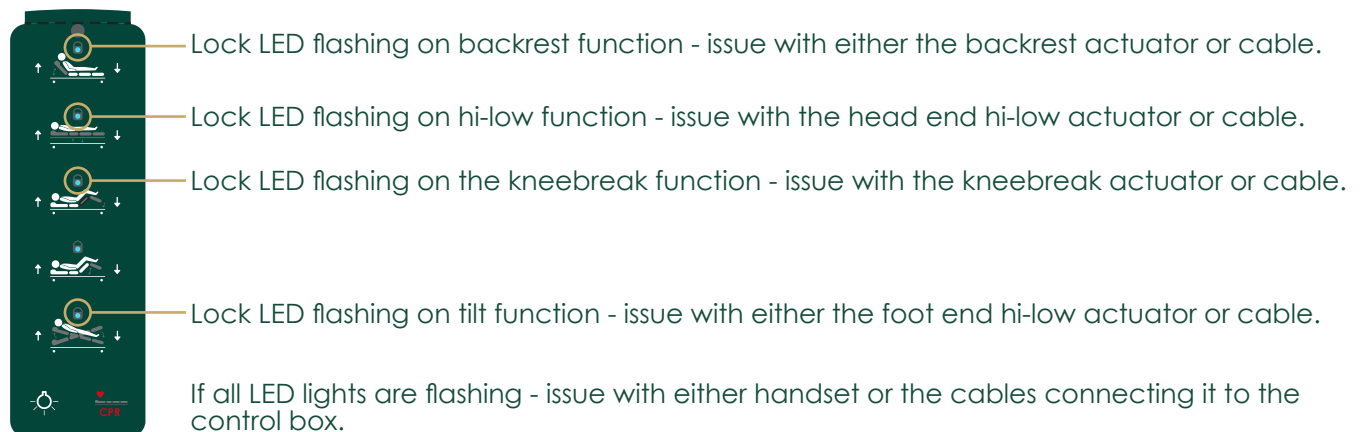


Press both hi-low buttons (up and down) together

- It will beep for 5 to 10 seconds
- don't let go of the buttons once beeping has stopped.
- After another 10 seconds the bed will start to rise, it will go to the maximum height and return to the minimum height.
- through this process don't let go of the buttons
- Once at the lowest position the back and knee function motor will retract right in, once this is complete, you will get a double beep.
- only let go of the buttons once you have heard these beeps

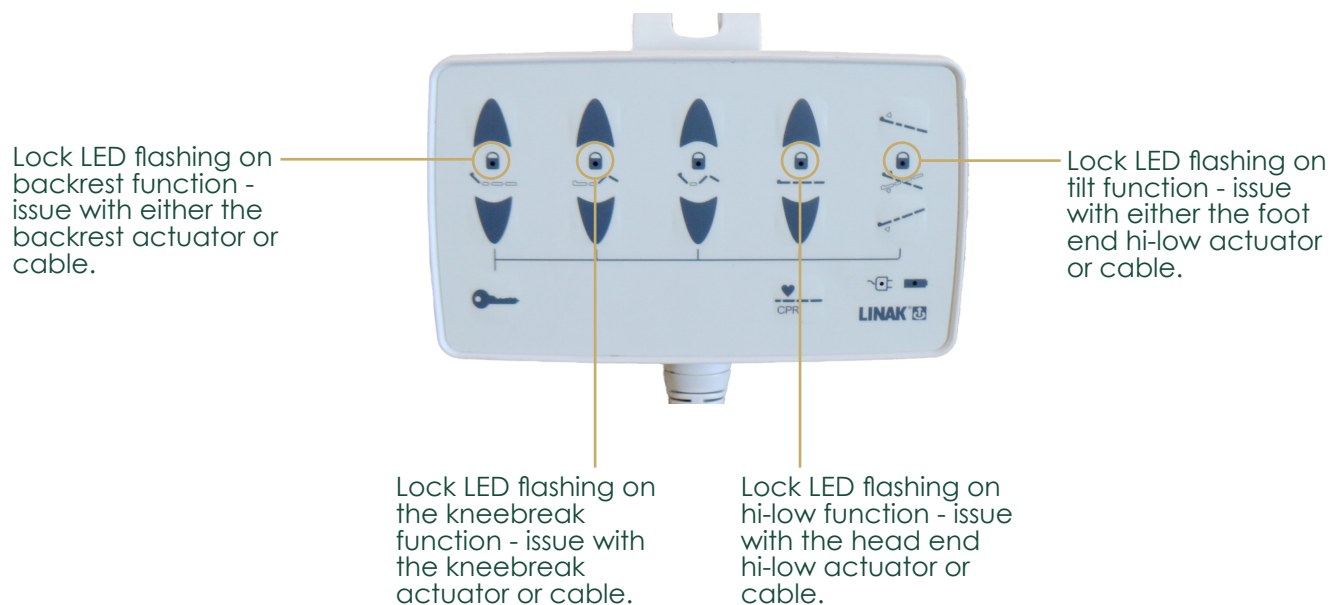
TROUBLESHOOTING

TROUBLESHOOTING WITH A HB400 HANDSET:



TROUBLESHOOTING WITH ACOM ATTENDANT CONTROL:

If all LED lights are flashing - issue with either handset or the cables connecting it to the control box.



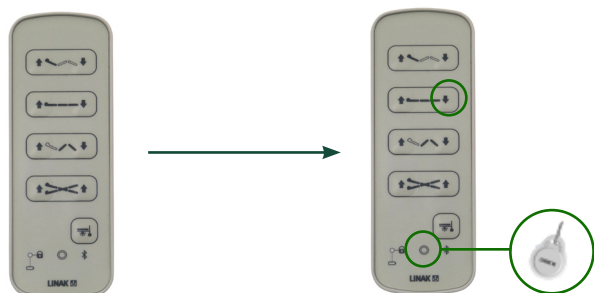
PAIRING BLUETOOTH DEVICES (optional)

DIRECT PAIRING

Direct Pairing is used for pairing a LINAK control directly to a LINAK control box that supports BLE.

1. Enter pairing mode
2. Move the hand control closer to the control box you want to pair it with
3. Pair the hand control with the control box

ENTER PAIRING MODE



Place the magnet key over the **Hall Element (O)** and press **Hi-Lo Down Button** for 3 seconds to enter the pairing mode.

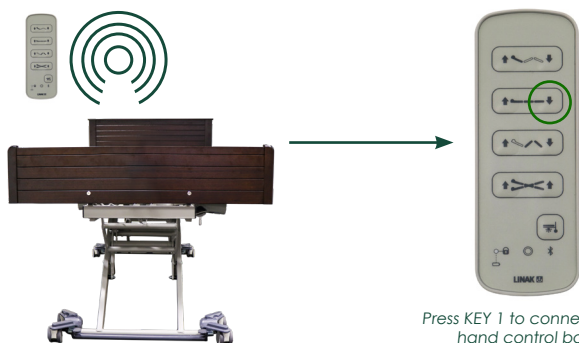


When in pairing mode, the control box buzzer will begin to beep, and the LED will begin to blink. The control unit LED will also begin to blink with the same frequency as the nearest control box.



In pairing mode, the light/sound frequency will increase when the HB200 gets closer to a control box.

CONNECTING TO THE CONTROL BOX



Press KEY 1 to connect the hand control box

When the hand control LED is blinking fast and the control box gives a high frequency sound in the same speed, the devices are ready for pairing. To finalise the pairing, press **Hi-Lo Down Button** on the hand control. Then, adjust your application with the handset.

RESET/INITIALISATION

This function must be performed when running the application for the first time, when replacing a Control Box or actuator or when adding to or removing an actuator from the application.

First stage the CB will automatically detect which actuators are connected to the system and run them through a cycle of setup. If one of the HILO or BACK actuators are not working, the control box will buzz ENDSTOP ERROR or FATAL ERROR. If the setup is not completed, some (or all) functions may be disabled.

RESET/INITIALISATION

RESETTING AN EN SERIES BED FITTED WITH A CO71 LINAK SERIES CONTROL BOX

Press both Hi-Low buttons (up and down) together.

- It will beep for 5 to 10 seconds.

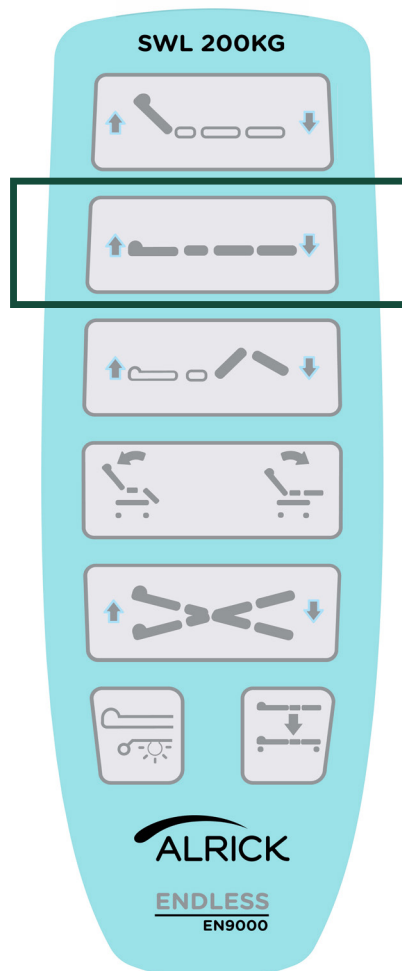
Don't let go of the buttons once the beeping has stopped.

- After another 10 seconds, the bed will start to rise, it will go right into the maximum height and return to the minimum height.

Throughout this process, don't let go of the buttons.

- Once at the lowest position, the back and knee function motor will retract right in, once this is complete, you will hear a double beep.

Only let go of the buttons once you have heard the double beep.



TROUBLESHOOTING

ENGINEER AND SERVICE - FAULT FINDING

PROBLEM	CAUSE	REMEDY
No functions	No power to system	Check the mains and/or battery connections
No functions LED indication ON	Possible loose connection	Check handset/ foot switch connections
Actuator will drive OUT but not IN	Position lost on actuator	Try initialisation procedure, if problem persists, replace actuator
Actuator will drive IN/OUT. Intermittent beeping from is pressed.	- Cable to actuator disconnected or faulty - Actuator is faulty	- Replace faulty component - Perform reset and initialisation procedure
One or more actuators stop while driving	Actuator is overloaded	Reduce or remove load on chair and try again
HILO columns will not drive IN/OUT	- Cable to column disconnected or faulty - Column is faulty	- Replace faulty component - Perform manual reset procedure

OPEN BUS DO'S AND DON'TS

1. Before connecting or disconnecting OPENBUS™ accessories or handsets to/from the system:
Disconnect the CB from mains power.
- Wait at least two minutes after the last key press.
2. Only connect the specified type of Actuator to the appropriate port on the CB, refer to section 'System Overview' and section 'Assembly'.
3. Only connect the specified handset to the system, refer to section 'Assembly'.
4. Wait at least 2 minutes after the last key press before removing the BA18xx battery from the system. Otherwise battery operation may be blocked for 30 minutes.
5. Do not connect/disconnect an actuator while pressing any keys on the handset or foot switch.
6. Use O-rings on all connectors and secure all connectors/cables with cable locking devices supplied.
7. Use blind plugs with O-rings to seal any unused ports on the CB and junction boxes.
8. Do not stretch or unduly strain any of the cables and connectors.

RECORD OF PERFORMED SERVICE PROCEDURES AND REGULAR SERVICE MAINTENANCE

Date

Purpose and Description

Performance

I confirm that technical staff have undertaken the repairs as described in the Record of Performed Service Procedures and Repairs Maintenance, and the equipment is now functioning properly.

Date _____ Customer Signature _____

ALRICK LUXA BED WARRANTY

CONDITIONS

Your Alrick Luxa Bed is guaranteed for 10 years on the frame from the date of purchase, 5 years on the electrics, 2 years on castors, 1 year on the battery. Professional service of product to be carried out annually and documented in the 'Record of Performed Service Procedures and Regular Service Maintenance'. This warranty applies only on the parts manufactured or approved by Alrick.

EXCLUSIONS

This warranty does not extend those items that may need replacement due to normal wear and tear, or to damaged caused by misuse or accident, for which Alrick or it's distributors cannot be held responsible.

If your bed should need attention due to failure as defined under the warranty above, please contact the distributor from whom you purchased your bed.

Please fill in the below and retain for your own records.

Date Purchased

Model

Serial Number(s)

Distributor

Distributor Address

Distributor Contact Number

ACCESSORIES



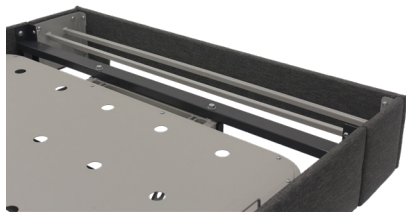
Luxa Horizontal 400HR EN7 Rails



Padded Cotside Protector



Luxa Clamp On Support Rail



Luxa 200mm Bed Extension



200mm Foam Bolster



IV Pole



Emergency Power Unit



EN T-Bar Buffer



Reading Lamp

RV 180225

Alrick.

1800 267 267
service@activemedical.au
www.activemedical.au