

Staebel Electric Profiling Shower Trolley User Manual

Code: 1213ST



Information to read before use/How the medical product functions

1. Before use carefully read the enclosed instructions for use.
2. Use the product only for its intended purpose.
3. Product can be used only by personnel who are familiar with the functioning of the product.
4. The maintenance, as well as the safety and technical check-ups, can be carried out only by an authorized service company or by any other professional company authorised by Koval.
5. Assembly, revisions or repairs can be carried out only by an authorised service company or by any other professional company authorised by Koval.
6. If technical modifications, including upgrades or revisions of the products, are not carried out by Koval or any other professional service company authorised by Koval, any guarantee for such revisions, as well as for products on which such revisions were carried out, shall be deemed void.

Preventive Measures

Carefully read the instructions for use. Use the product only for its intended purpose.

Always follow the notes under the »WARNING« signs.

Intended Use

This equipment is intended for assisted hygiene care, especially showering and transporting of residents in care environments like senior/assisted living, special care, medical facilities, hospitals, nursing homes, rehabilitation units and other health care use. The equipment is intended for indoor use. Four-piece trolley top increase comfort of the patient and improves the working environment of the caregiver.

Regulations and Norms

Always ensure compliance with valid norms or regulations.

CE Mark

CE mark refers to the Regulation for medicinal products MDR 2017/745.

Responsibility and Guarantee

The manufacturer of the product is responsible for the safety and reliability of the product provided that:

A: The product is used solely for its intended use.

B: The functional check-ups are carried out on a regular basis.

Transport Damages

Upon delivery, please, check the product and its packaging for damages. Always refer to the delivery date: visible damages should be reported within 2 days after delivery and hidden damages within 7 days after delivery.

Serial Number

The serial number is located on the product label, which can be found on the shower base.

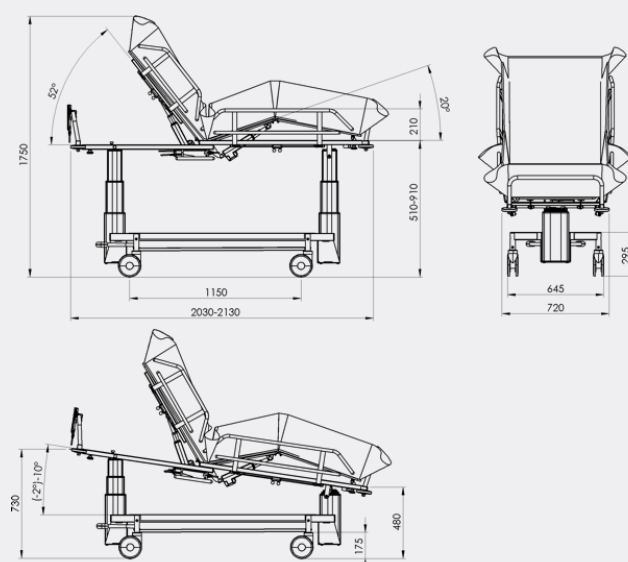
Parts Designation

1. Shower mattress
2. Head cushion
3. Drainage outlet
4. Drainage hose
5. Long side rails
6. Short side rails
7. Foot end rail
8. Head end rail
9. Bumper wheel
10. Shower trolley top
11. Safety mechanism
12. Caster
13. Front left directional caster
14. Central brake / straight steering
15. Lifting column
16. Electric actuator
17. Control box
18. Handset
19. Battery
20. Metal sheet base cover



Specifications

Product Code	1213ST
Shower trolley top Width	650 mm
Shower trolley top Length	1900 mm
Electric Hi-Lo	520 - 920 mm
Castors (Diameter)	150 mm
Top Inclination Trendelenburg	0°-to -2°
Trolley Top Inclination	0°-to -10°
Head Section Inclination	0°-to -52°
Length	2030 - 2130 mm
Width	810 mm
Weight	104 kg
SWL	200 kg



First use

Unpack the Staebel shower trolley. Shower mattress is transported upside down, remove the foil that holds the mattress and turn it around. Align the drainage outlet with the drainage hole on the shower trolley top and secure it with the drainage outlet and drainage nut to the shower trolley top. Take the drainage hose and screw it on the drainage outlet. Raise the side rails. Staebel shower trolley is ready for use.

Product use:

Adjusting the headrest

With electric actuator: To raise headrest inclination press and hold UP arrow button in the upper row of the handset and set the desired position.

To lower headrest inclination press and hold DOWN arrow button in the upper row of the handset and set the desired position.

Raising and lowering

Raising and lowering of the electric shower trolley top is adjustable with handset.

To raise electric shower trolley top, press and hold the UP arrow button in the middle row of the handset and set the desired position.

To lower electric shower trolley top, press and hold the DOWN arrow button in the middle row of the handset and set the desired position.

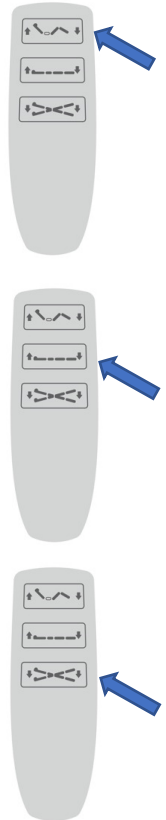
Shower trolley top inclination

Trendelenburg position: is adjustable with handset.

To adjust Trendelenburg position, press and hold the LEFT DOWN arrow button in the lower row of the handset and set the desired position.

Reverse Trendelenburg position / anti-Trendelenburg position:

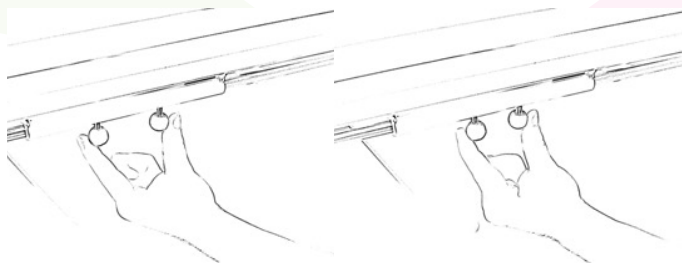
To adjust anti-Trendelenburg position, press and hold the RIGHT DOWN arrow button in the lower row of the handset and set the desired position.



Raising and lowering the side rails

For lowering the side rails use one hand to squeeze pins to the middle of the shower trolley top to release the side rail.

Pull the side rail up until it locks into the vertical position.

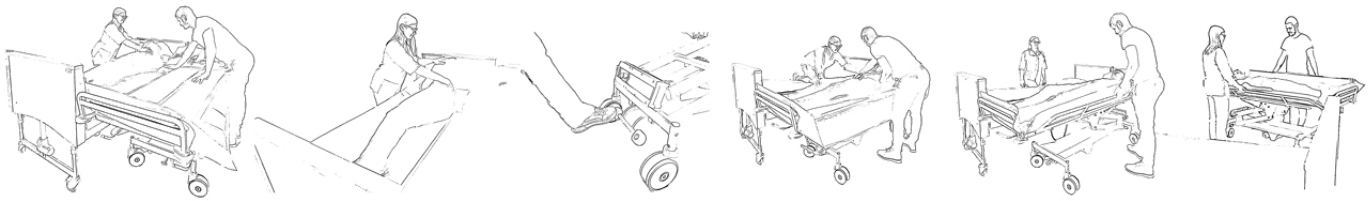


Brakes and straight steering

Push the lever in the lower position to brake the casters. Lift the lever into middle position to unlock the casters. Lift the lever into the upper position to lock front left caster into transport direction for straight steering and easy manoeuvring.



Step-by-step use



WARNING

- To avoid injury, always lock the central brake when trolley is stationary. (See Fig. 1)
- To prevent patient falls or caregiver injuries make sure that there are two caregivers present during the transfer of a patient if this is necessary according to the patient state.
- To avoid injury, make sure that the patient is not left unattended at any time.
- To avoid injury during patient transport and shower, pull the side rails up to lock them in the vertical position before transporting and showering the patient. (See Fig. 2)
- To prevent cross-contamination, disinfect regularly between each use.
- To prevent patient from drowning, always keep patient head above the water and make sure that there are two or more caregivers present during patient bathing.
- To avoid body injury, do not reach under the headrest with hand.



Fig. 1



Fig. 2

Maintenance

The product is recommended to be cleaned and/or disinfected regularly between each use, if necessary, or daily, as a minimum. Clean the product with a damp cloth using warm water and a disinfectant cleaner. The shower trolley has a removable PVC coated mattress which must be washed and cleaned after each use. Make sure to have the Material Safety Data Sheets (MSDS) available for the disinfectant being used. **NOTE:** Be careful with using alcohol-based detergents higher than 40%, otherwise the upper flat may be damaged.

Do not use detergents containing solvents, such as trichlorethylene. This can damage the PVC upper flat pad. Do not use disinfectants based on iodine they can leave marks. Finally, the material should be rinsed with warm water and wiped with dry cloth.

Safety and technical checks

Pursuant to the "Medical Product Act" the safety and technical checks should be carried out once a year.

Repairs, service and spare parts

In case of technical problems, please, contact Koval or your local Koval representative.