

Staebel Shower Trolley User Manual

Code: 1209ST



Information to read before use/How the medical product functions

1. Before use carefully read the enclosed instructions for use.
2. Use the product only for its intended purpose.
3. Product can be used only by personnel who are familiar with the functioning of the product.
4. The maintenance, as well as the safety and technical check-ups, can be carried out only by an authorized service company or by any other professional company authorised by Staebel.
5. Assembly, revisions or repairs can be carried out only by an authorised service company or by any other professional company authorised by Staebel.
6. If technical modifications, including upgrades or revisions of the products, are not carried out by Staebel or any other professional service company authorised by Staebel, any guarantee for such revisions, as well as for products on which such revisions were carried out, shall be deemed void.

Preventive measures

Carefully read the instructions for use. Use the product only for its intended purpose.
Always follow the notes under the »WARNING« signs.

Intended use

This equipment is intended for assisted hygiene care, especially showering and transporting of residents in care environments like senior/assisted living, special care, medical facilities, hospitals, nursing homes, rehabilitation units and other health care use. The equipment is intended for indoor use.

Regulations and norms

Always ensure compliance with valid norms or regulations.

CE mark

CE mark refers to the Directive 93/42/EEC for medicinal products and MDR 2017/745.

Responsibility and guarantee

The manufacturer of the product is responsible for the safety and reliability of the product provided that:

A: The product is used solely for its intended use.

B: The functional check-ups are carried out on a regular basis.

Transport damages

Upon delivery, please, check the product and its packaging for damages. Always refer to the delivery date: visible damages should be reported within 2 days after delivery and hidden damages within 7 days after delivery.

Serial number

The serial number is located on the product label, which can be found on the shower trolley top brace.

Parts Designation

- | | |
|-----------------------------------|---|
| 1. Shower mattress | 14. Gas spring |
| 2. Head cushion | 15. Central brake / straight steering |
| 3. Drainage outlet | 16. Electric actuator |
| 4. Drainage hose | 17. Control box |
| 5. Side rails | 18. Handset |
| 6. Foot end rail | 19. Battery |
| 7. Head end rail | 20. Emergency stop button |
| 8. Bumper wheel | 21. Charger |
| 9. Tilt control lever | 22. Hydraulic (non electrical shower trolley only) |
| 10. Shower trolley top | 23. Pedal for raising/lowering (non electrical shower trolley only) |
| 11. Safety mechanism | 24. Metal sheet base cover |
| 12. Caster | |
| 13. Front left directional caster | |



Specifications

Shower trolley Top Width:	650 mm
Shower trolley Top Length	1900 mm
Shower trolley Top Height:	540 - 970 mm (casters 150 mm) 600 - 1030 mm (casters 200 mm)
Trolley top inclination	0° - 5°
Length:	2070 mm
Width:	810 mm
Weight:	103 kg - HYD 105.5 kg - EL
Safe working load:	170 kg



First use

Unpack the Staebel shower trolley. Shower mattress is transported upside down, remove the foil that holds the mattress and turn it around. Take the drainage hose and lead it through drainage hole on shower trolley top. Raise the side rails. Staebel shower trolley is ready for use.

Product use:

Raising and lowering

Raising and lowering of the electric shower trolley top is adjustable with handset.

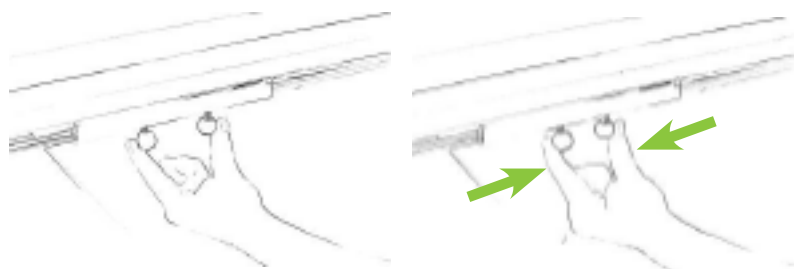
To raise hydraulic shower trolley top pump the pedal with foot using full range of motion.



Raising and lowering the side rails

For lowering the side rails use one hand to squeeze pins to the middle of the shower trolley top to release the side rail.

Pull the side rail up until it locks into the vertical position.



Brakes and straight steering

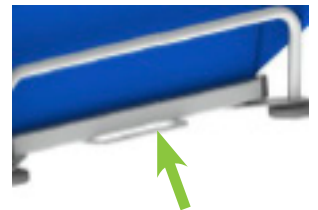
Push the lever in the lower position to brake the casters. Lift the lever into middle position to unlock the casters. Lift the lever into the upper position to lock front left caster into transport direction for straight steering and easy maneuvering.



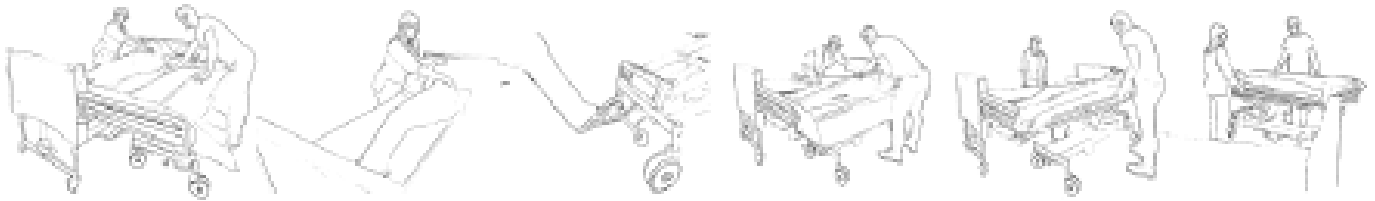
Shower trolley top inclination

Reverse Trendelenburg position: use one hand to lift the lever and the other hand to adjust shower trolley top inclination.

Horizontal position: use one hand to lift the lever and the other hand to push shower trolley top into horizontal position.



Step-by-step use



Warning

- To avoid injury, always lock the central brake when trolley is stationary. (See Fig. 1)
- To prevent patient falls or caregiver injuries make sure that there are two caregivers present during the transfer of a patient if this is necessary according to the patient state.
- To avoid injury, make sure that the patient is not left unattended at any time.
- To avoid injury during patient transport and shower, pull the side rails up to lock them in the vertical position before transporting and showering the patient. (See Fig. 2)
- To prevent cross-contamination, disinfect regularly between each use.
- To prevent patient from drowning, always keep patient head above the water and make sure that there are two or more caregivers present during patient bathing.



Figure 1



Figure 2

Maintenance

The product is recommended to be cleaned and/or disinfected regularly between each use, if necessary, or daily, as a minimum. Clean the product with a damp cloth using warm water and a disinfectant cleaner. The shower trolley has a removable PVC coated mattress which must be washed and cleaned after each use. Make sure to have the Material Safety Data Sheets (MSDS) available for the disinfectant being used.

NOTE: Be careful with using alcohol-based detergents higher than 40%, otherwise the upper flat may be damaged.

Do not use detergents containing solvents, such as trichlorethylene. This can damage the PVC upper flat pad. Do not use disinfectants based on iodine they can leave marks. Finally, the material should be rinsed with warm water and wiped with dry cloth.

Safety and technical checks

Pursuant to the the "Medical Product Act" the safety and technical checks should be carried out once a year.

Repairs, service and spare parts

In case of technical problems, please, contact Staebel or your local Staebel representative.